



# HYDRILLA

INNOVATIVE AQUATIC PLAY



## AQUATIC PLAY

Splash Pads and Water play facilities offer an interactive playscape, fostering imagination and creativity. From simple jets to elaborate water features, there are options to create a water play experience in most traditional playgrounds.

As urban designs influence and shape new ideas about community spaces we predict you will see more and more aquatic play features included in multipurpose community areas.

*Water play fosters learning in all developmental areas. It provides opportunities for children to experiment with math and science concepts, strengthen their physical skills, advance their social and emotional skills, and enhance language development (Crosser, 1994; Hendrick, 1996).*

Incorporated water play features or stand alone splash pads, provide sensory, multi generational and inclusive play options. The sites can be specifically water themed, for exclusive use in warmer weather, or fused with traditional landscape and play equipment to activate the space year round.

A recent report by The Urban Developer supports the idea that Active Spaces such as parks, playgrounds and sports facilities are draw cards in new housing estates and developments. First Home Buyers and Families looking to purchase in these areas are attracted to engaging and high-quality facilities. Including elements of Water Play or a splash Park in your community or development can have a positive economic and social benefits for the community, the council and the developer.

UNDERUTILISED PARKS AND  
RECREATIONAL PRECINCTS  
CAN BE INVIGORATED WITH  
SOME SIMPLE IDEAS.



## Design & Construction

Including aquatic play elements in an existing play space, or creating a new Splash pad from scratch is an area where our engineers and experienced commercial aquatics team can assist you. Underutilized parks and recreational precincts can be invigorated with some simple ideas. Public and civic spaces can be reactivated and given a new lease on life with an interactive water play feature or splash zone.

Collaborating with you and members of the community we can create aquatic features that will seamlessly integrate into natural settings or provide water play equipment that fits with existing play equipment, providing somewhere that imagination and play will thrive.

Themed collections of aquatic play equipment already exists or we can involve your community stakeholders to create something uniquely their own, telling the story of your community and people.

## Servicing & Maintenance

For already existing water play facilities, ensuring the safety of the community is of paramount importance. Water in these parks can be exposed to high amounts of bacteria and without commercial grade water treatment and sanitation equipment there is a risk to community health and safety.

Our services include renovating and repairs to ensure your water play facilities meet the required standards. Continuous remote monitoring, emergency call-outs and daily maintenance for systems can all be arranged with our team taking care of your assets in a professional manner.



[Click here to watch our splash pad & water play video shot on location at West Beach Parks.](#)



#### LOCATION

Cowell, South Australia

#### CLIENT

District Council of Franklin Harbour

#### CATEGORY

New Build

#### FEATURES

Water Park  
Zero Depth Splash Pad

# Cowell Water Park

The District Council of Franklin Harbour undertook a visionary \$10 million foreshore redevelopment project in Cowell with the aim of enhancing the liveability of the region and boosting tourism.

Striving for innovation and excellence, the council conceptualised an interactive, all-ages water park, complete with dual waterslides, to complement a traditional playground, skate park, and bouncy pillow.

The result is a one-of-a-kind, family-friendly entertainment destination that offers endless hours of fun and enjoyment to both locals and visitors alike. This ambitious project is a shining example of the council's commitment to creating outstanding public spaces that bring communities together and drive economic growth.

Despite the challenges posed by the COVID-19 pandemic, the construction of this exceptional project persevered. The pandemic's impact on the splash park project was primarily felt in the form of delays from the waterslide supplier and other features, as well as global shipping disruptions. The practical works on the park were postponed due to these obstacles, compounded by difficulties in securing skilled tradespeople during lockdowns and state border closures.



#### LOCATION

Port Augusta, South Australia

#### CLIENT

Port Augusta Council

#### CATEGORY

Redevelopment

#### FEATURES

Refurbished 50m Lane Pool  
Accessibility Ramp  
Refurbished Learn To Swim Pool  
Splash Pad  
Plantroom Upgrade

## Ryan Mitchell Swim Centre

Our work at the Ryan Mitchell Swim Centre has set a new benchmark for commercial renovations, demonstrating what can be achieved when a team is committed to delivering excellence, that meets the needs of the community.

The Ryan Mitchell Swim Centre in Port Augusta has recently undergone a remarkable transformation, solidifying its position as a vital community asset. With over 50 years of service, the Centre was showing significant signs of wear and tear, requiring urgent attention to its ageing structures and pool operating systems. Through securing partial Government funding, the council was able to initiate major commercial renovation works. These included a complete replacement of the water treatment plant and underground pipework for the 50m pool, learn to swim and toddlers pools. Structural improvements focused on enhancing accessibility, with a new disability ramp built on the side of the 50m pool, and a state-of-the-art Splash Pad installed.

This renovation project showcases a successful collaboration between the Council, Government, and local contractors. This achievement demonstrates a strong commitment to the community by ensuring this valuable asset remains accessible, functional and visually appealing, creating an outstanding facility for all to enjoy.



**LOCATION**  
West Beach,  
South Australia

**CLIENT**  
Adelaide Shores

**CATEGORY**  
Construction

**FEATURES**  
Zero Depth Splash Pad  
Multiple Water Features  
Water Treatment System

## Splashzone at West Beach Parks

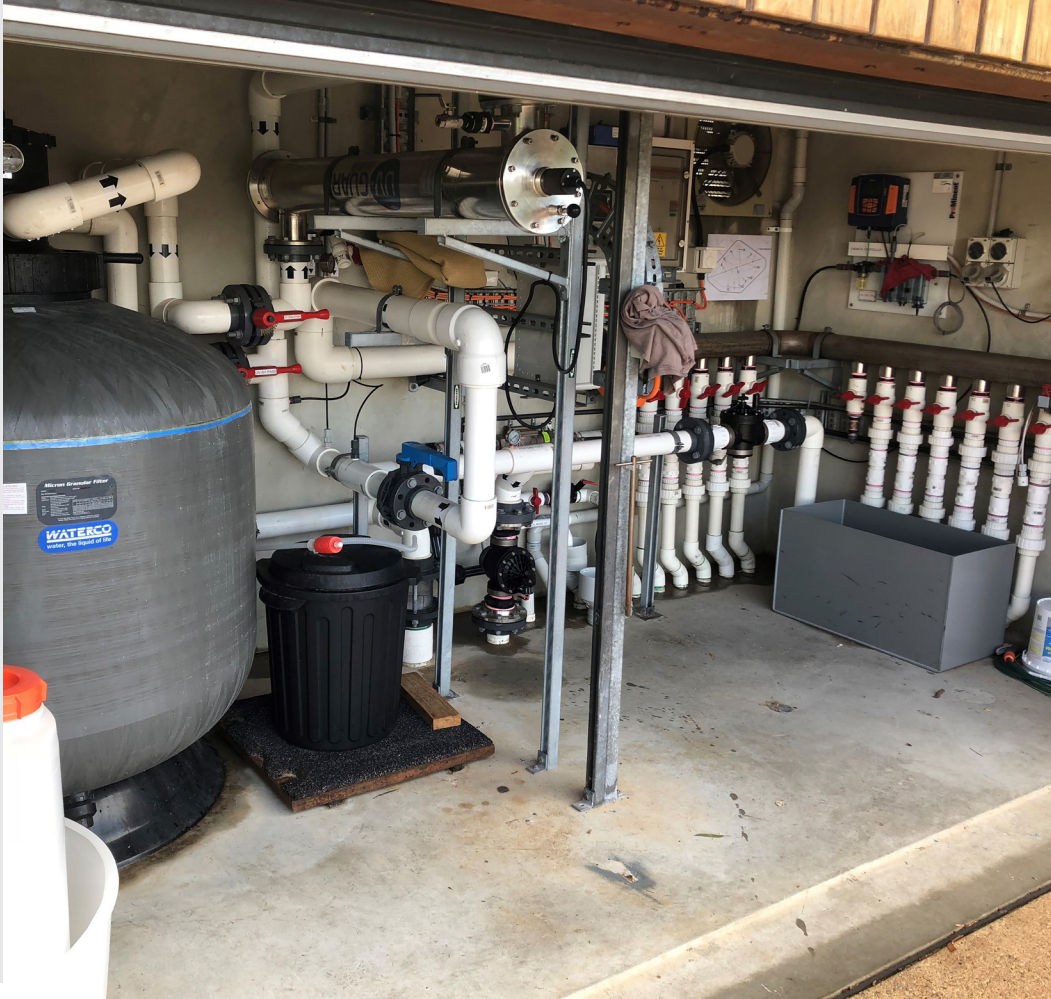
Big 4 West Beach Parks is a holiday destination attracting families with the wealth of facilities on offer including the Water Play park which opened in October 2013. Designed to cater for toddlers through to teenagers the variety of features is an outstanding example of a modern splash park.

Nestled in the 135 hectare tourism and recreation reserve that is West Beach Parks, the Big 4 Holiday Park offers a swimming pool and a Splash Park both built by Hydrilla (then State Wide Pool Services).

The zero depth splash pad was constructed in 2013 and is a huge 350 square meters of combined water features and seating for parents to supervise their children enjoying the park.

The Splash Pad was designed with three distinct play zones suitable for all ages and abilities:

- Toddler Zone - featuring low ground sprays, predictable water patterns and low traffic flow
- Kid Zone - featuring more interactive themed features, spiller and water spirals
- Teen Zone - dumping buckets, mega soaker's, water cannons and big spray unit



**LOCATION**  
Munno Para,  
South Australia

**CLIENT**  
City of Playford

**CATEGORY**  
Redevelopment

**FEATURES**  
Water Treatment System  
UV Disinfection  
Free Chlorine Probe  
Remote Monitoring

## Playford Alive Town Park

The safety and quality of the water used in the water play features at the park are an ongoing priority for the council and Hydrilla.

A unique and multi-functional community space, the Playford Alive Town Park has a range of play and recreational features catering for all ages. One of the unique elements of the park is the integrated water play area that is suitable for all ages.

Splash Pads or Spray Parks are designed to be stand-alone systems. Usually un-staffed and often unfenced, they provide unrestricted access to the public. This places an increased obligation on the water treatment system to supply clean, safe water continually to ensure the safety of all users. Designing and maintaining a system like this is not a simple task.

While Hydrilla did not construct the original water play features or water treatment system at the park, we were invited to consult on the water quality after the parks initial season. Independent commissioned reports raised questions on the ability of the installed system to provide the high quality of water the South Australian Health Department guidelines require. We agreed that the existing system was not suited to the high demands of the park and developed a proposal for the council to consider an upgrade to the water treatment system as well as regular servicing and daily monitoring of the park during the summer season.



# HYDRILLA

6 Cord Street  
Dudley Park SA 5008

PO Box 591  
North Adelaide SA 5006

T 08 8169 9500  
info@hydrilla.com.au

**hydrilla.com.au**

ABN 64 620 130 734